



**TUVALU GOVERNMENT**  
**MINISTRY OF FINANCE AND ECONOMIC PLANNING**

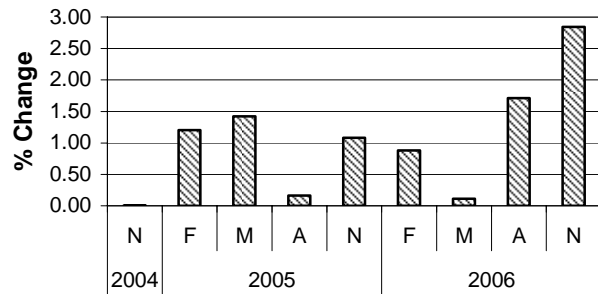
**CONSUMER PRICE INDEX REPORT**  
**NOVEMBER 2006**

(4<sup>th</sup> Quarter Report 2006)

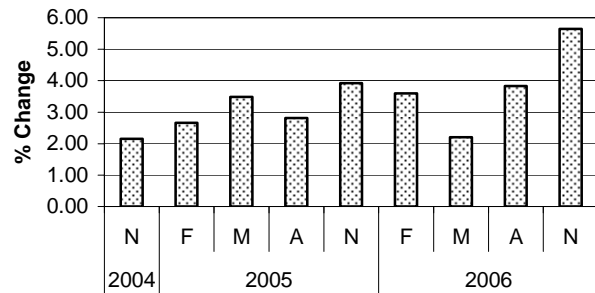
**Highlights**

- *The Consumer Price Index rose 2.84 percent in the November 2006 quarter.*
- *Food price rose by 1.57%, with main contributions coming from higher prices for Sugar and Sweets, cooking oil & fats, dairy produce in particular condense milk.*
- *Alcohol & Tobacco price rose by 0.37% mainly due to the increase to the price of wine.*
- *Clothing & Textiles prices rose by 37.74% driven by higher prices for Men's Shirts.*
- *Transport prices rose by 0.07%, driven by higher prices for diesel.*
- *Housing prices rose by 4.79% with strong contribution from Kerosene.*
- *Miscellaneous offsetting price falls by 1.11% mainly due to prices falls for deodorant.*
- *The CPI increase by 5.64% for the year to the November 2005 quarter.*

**Consumer Price Index**  
*Quarterly Percentage Change*



**Consumer Price Index**  
*Annual Percentage Change*



## OVERVIEW

The prices for this last quarter of 2006 was collected on from 20<sup>th</sup> to 23<sup>rd</sup> of November 2006. The prices were confirmed on 24<sup>th</sup> November 2006. There were no substitution taken place for this quarter. The method of substitution is used when items are no longer available on the shelves.

The Tuvalu Consumer Price Index (CPI) expression base is currently based on the second quarter of May 2006. Prices were collected from the following Outlets:

*Fetuvalu High School, Falesa Gas, NAFICOT, Marine Department, Funafuti Fusi, Samuelu Hardware, Kaupule Funafuti, Semaia Bus Service, Matagi Gali Bar, Vaiaku Lagi Hotel, Lucky Set Bar, Setusa & Pasefika Fish Market, Manaema Bakery, Telecom, Travel Office, TEC, Personnel & Training Department, Bread Market, Sulani & Afelee Video Library.*

### **Tuvalu Consumer Price Index Revision**

The All Group Index of the Tuvalu Consumer Price Index (CPI) for this quarter of the year records an increase from 1017.09 of the previous quarter to 1046.01 for this quarter. This result in a quarterly percentage change of **2.84%** for which result in the net change of 28.91.

This change results in the annual inflation rate of **5.64%** for the last twelve months as compared to the inflation rate of 3.83% of the previous quarter. The reasons behind this increase in the inflation rate are explained in the *analysis significant movement within indices (and therefore indicate which item or regimen have increase or decrease their prices)*. This observation is shown in Graph 1 (next page). Graph 1 shows the Annual Inflation Rate from 1996 to this quarter (last) of 2006. This Annual Inflation Rate is the difference of All Group Index in percentage between a current quarter and the same quarter of the previous year.

Table 1 on the next page shows that there is an increase in the **average rate quarterly inflation rate** (average for all four quarters) for the last ten years from 1996 to 2006. There is an increase from 2.83% in 2004 to 3.80% in 2006. However there is a decrease from 3.38% in 2003 to 2.83% in 2005. The reason for the decreases and increases in inflation rate have been explain in earlier quarterly report for the mention period.

**TABLE 1: ANNUAL INFLATION RATE IN PERCENTAGE BY QUARTERLY PERIOD**

(Base May 2006 = 1000)

<b>YEAR</b>	<i>February</i>	<i>May</i>	<i>August</i>	<i>November</i>	<i>Average Rate</i>
1996	3.0	0.7	-0.5	0.0	0.80
1997	1.2	1.7	1.8	1.7	1.60
1998	-0.1	1.3	1.2	1.0	0.85
1999	3.5	1.8	2.2	5.3	3.20
2000	5.1	5.3	3.9	1.3	3.90
2001	-1.8	-0.5	3.9	4.6	1.53
2002	7.5	9.9	3.2	0.0	5.15
2003	1.5	1.2	4.1	6.7	3.38
2004	5.1	1.6	2.4	2.2	2.83
2005	2.7	3.5	2.8	3.9	3.23
2006	3.6	2.2	3.8	5.6	3.80

**Note:** Central Statistics Divison can provide earlier inflation rates from 1985 to 1995

**Graph 1: Tuvalu Annual Inflation Rate**

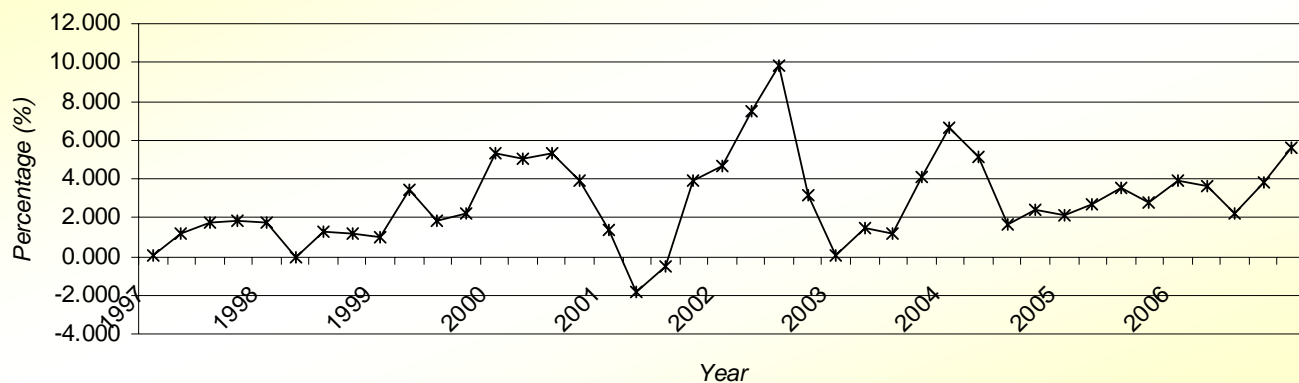


Table 2 below shows the trends of price indices by major groups, for the last three and twelve months period.

**Table 2: Consumer Price Index - Funafuti, Tuvalu**

<b>Major Group</b>	<b>Nov-05</b>	<b>Aug-06</b>	<b>Nov-06</b>	<b>Changes in Percentages (%)</b>	
				<b>3 Months</b>	<b>12 Months</b>
<i>Food</i>	981.54	1009.75	1025.64	1.57	4.49
<i>Alcohol &amp; Tobacco</i>	1009.82	989.28	992.93	0.37	-1.67
<i>Clothing &amp; Textiles</i>	947.35	977.96	1347.06	37.74	42.19
<i>Transport</i>	981.78	1181.47	1182.34	0.07	20.43
<i>Housing</i>	986.29	989.95	1037.34	4.79	5.18
<i>Miscellaneous</i>	995.16	993.85	982.85	-1.11	-1.24
<b>ALL ITEMS</b>	<b>990.16</b>	<b>1017.09</b>	<b>1046.01</b>	<b>2.84</b>	<b>5.64</b>

As stated before, the above table shows an increase in the overall index of **2.84%** from the previous quarter. The increase was mainly contributed by the increase of major group index such as Clothing & Textiles (37.74%), Housing (4.79%), Food (1.57%), Alcohol & Tobacco (0.37%) and Transport (0.07%). One major group opposing the increase is Miscellaneous with a negative change of 1.11%.

For the last twelve months there is an increase in the overall index of **5.64%**. This increase was contributed by major groups such as Clothing & Textiles (42.19%), Transport (20.43%), Housing (5.18%), and Food (4.49%). Opposing the increase are the declines in major group indices for Miscellaneous (-1.24%) and Alcohol & Tobacco (-1.67%).

The following explanations briefly indicate the significant movements within the indices:

**Note:** Refer to appendix 2

**(Contributions generally show the effect of items with price changed, sub-groups and major groups onto the overall net change of the CPI. It simply indicate the 'quantity added to or subtracted from the previous quarter all groups index' to provide the current CPI)**

### **Food Group**

The group records an increase of 1.57% for this quarter as compared to the previous quarter (from 1009.75 to 1025.64). The increase is mainly due to the following increase of index for subgroup Cooking Oil & Fats (22.56%), Miscellaneous Food (6.68%), Dairy Produce (7.61%), Sugar & Sweets (5.54%), Beverages (5.77%) and Meat (0.56%). Opposing the increase of subgroups indices is subgroup index for Cereals (-0.64%). The following are some of the commodities with increases to their prices:

• Dripping	71.43%	(i.e. from \$2.80 to \$4.80)
• Condense Milk	50.00%	(i.e. from \$2.40 to \$3.60)
• Onions	33.33%	(i.e. from \$1.80 to \$2.40)
• Lamb Chops	16.42%	(i.e. from \$6.70 to \$7.80)
• Meals take Away Restraunt	6.68%	(i.e. from \$5.00 to \$5.70)
• Taro	10.00%	(i.e. from \$3.00 to \$3.30)
• Cassava	12.50%	(i.e. from \$2.40 to \$2.70)
• Tea	11.00%	(i.e. from \$1.80 to \$2.00)
• Soft drinks	11.00%	(i.e. from \$0.90 to \$1.00)
• Tomato Sauce	8.93%	(i.e. from \$2.80 to \$3.05)
• Soy Sauce	6.67%	(i.e. from \$1.50 to \$1.60)

Offsetting the above increase is the decrease in the price of the following commodities:

• English Cabbage	-51.85%	(i.e. from \$5.40 to \$2.60)
• Pears	-40.32%	(i.e. from \$6.20 to \$3.70)
• Oranges	-44.23%	(i.e. from \$5.20 to \$2.90)
• Eggs	-4.76%	(i.e. from \$6.30 to \$6.00)
• Lamb Necks	-4.44%	(i.e. from \$4.50 to \$4.30)
• Salt	-6.25%	(i.e. from \$1.60 to \$1.50)

The group total contribution resulted from its items-to-price with change in price is 1.57.

### **Alcohol & Tobacco**

The group records an increase of 0.37% to the overall index (from 989.28 to 992.93) as a result of the increase to the price of Wine from \$21.00 to \$25.30 (20.48%). It has an item-to-price contribution of 0.578. Opposing the increase is the decrease to the average price of distilled spirit from \$32.00 to \$31.43 (-1.78%). The item contribution for distilled is 0.46.

The total group total contribution resulted from items-to-price with change in price is 0.422.

### **Clothing & Textiles**

This group recorded a quarterly increase of 37.74% (from 1349.30 to 1353.03). Three commodities affected this group – Men's T-Shirt, Men's singlet and Nappies. Prices for Men's T-Shirt increase from \$9.80 to \$24.70 (152.04%). Price for Men's Singlet increases from \$8.90 to \$22.00 (147.19%) and Nappies price have a -11.11% decrease (from \$0.90 to \$0.80). Item-to-price contribution for this the whole group is 10.25.

### **Transport**

The group index recorded an increase from 1181.47 to 1182.34 (0.07%). The only commodity affected this group is Diesel with a price from \$1.80 to \$1.85 (2.78%). The total group contribution is 0.08.

### **Housing**

Two sub groups have effect to the group; House Maintenance and Fuel & Electricity. Commodity Cement under House Maintenance increases its price from \$17.00 to \$18.00 resulting in a quarterly price change of

2.78% and with a contribution of 0.35. For subgroup Fuel & Electricity, two commodities contribute to the effect on the subgroup; Kerosene and Butane Gas. Kerosene has a quarterly price increase of 28.57% from \$1.40 to \$1.80 and a contribution of 7.80. For Butane Gas which has a quarterly price increase of 4.88% (i.e. from \$41.00 to \$43.00) and with a contribution of 0.43

The group total contribution resulted from items-to-price with change in price is 8.57.

### **Miscellaneous**

Miscellaneous recorded a group index decrease of 1.11% (from 993.85 to 982.85) for this quarter if compared to the previous quarter with group contribution of -1.62. Two commodities contribute to this effect – Deodorant and Bar Soap. Deodorant price decreases from \$4.10 to \$2.15 (-47.56%) with a contribution of -1.31. For Bar Soap, its commodity price decreases from \$3.90 to \$3.70 (-5.13%) with a contribution of -0.31.

The group total contribution resulted from item-to-price with change is -1.62.

### **CONCLUSION**

This Consumer Price Index shows an increase of **2.84%** for this last quarter of 2006 as compared to the increase of **1.26%** for the previous quarter third quarter 2006. The annual inflation rate from the first quarter of 2007 to this fourth quarter of 2006 is **5.64%**.

Five of the six CPI Groups made upward contributions to the quarterly increase in the November 2006 quarter. The most significant upward contribution came from clothing & textiles (up 37.74%), housing (up 4.79%), food (1.57%), alcohol & tobacco (up 0.37%) and transport (0.07%). The only CPI Group offsetting price falls this quarter is miscellaneous (down 1.11%).

The biggest upward individual contribution came from Men's T-shirt and singlet (up 152.0% and 147.1% respectively), followed by dripping (up 71.4%), condense milk (50.00%), cooking oil (up 35.1%), onions (up 33.33%) and kerosene (up 28.6%). The reason for the increase of men's shirts is the result of the global downward supply of cotton from growing countries mainly Australia. This is a result of poor soil due to due to long period of drought in many growing areas. Dripping have been increase because of high demand for cattle and sheep meat. As usual kerosene price have been increase due to the increase to global demand for oil.

The most significant offsetting price falls contributions of for this quarter were deodorant (down 47.6%), English cabbage (down 51.9%), oranges (down 44.23%) and pears (down 40.3%). The mention fruits & vegetables have experience price falls due to good growing conditions in NZ particularly oranges and pears.

Niutatui I Niutatui  
**Statistical Analyst**

## Appendix 1: Annual Consumer Price Index (CPI)

Annual indices on the base 2<sup>nd</sup> Quarter 2006 are shown in the following tables. They have been calculated as the simple average of the constituent's quarters using un-rounded quarterly index numbers. Please note that fares and household appliances were not part of items selected in basket of goods prior to May 2006.

(Base May 2006 = 1000)

	2005				2006			
	Feb-05	May-05	Aug-05	Nov-05	Feb-06	May-06	Aug-06	Nov-06
<b>1 Food Group</b>								
1.1 Meat	918.5789	939.1575	946.81	954.97	974.47	1000.00	999.69	1005.26
1.2 Fish	949.7216	1014.401	1014.401	902.00	968.64	1000.00	1053.33	1053.33
1.3 Dairy Produce	965.1073	987.6325	984.1298	1005.61	996.02	1000.00	1166.46	1255.23
1.4 Cereals	999.5794	986.3875	1011.677	1024.99	1028.00	1000.00	1006.46	1000.00
1.5 Sugar and Sweets	870.9395	870.9395	915.6663	915.67	915.67	1000.00	1000.00	1055.41
1.6 Fruits & Vegetables	917.2199	998.5036	982.4884	1059.35	1093.75	1000.00	1044.18	1069.15
1.7 Beverages	981.9123	982.395	982.395	1009.21	996.95	1000.00	961.15	1016.56
1.8 Cooking Oil and Fats	1004.29	1004.29	1004.29	1004.29	1000.00	1000.00	1000.00	1225.61
1.9 Miscellaneous	882.7489	988.9669	984.0463	989.62	1000.00	1000.00	868.93	926.97
<b>Total Food Group</b>	<b>944.9512</b>	<b>965.297</b>	<b>977.1283</b>	<b>981.54</b>	<b>994.65</b>	<b>1000.00</b>	<b>1009.75</b>	<b>1025.64</b>
<b>2 Alcohol &amp; Tobacco Group</b>								
2.1 Alcohol	933.3279	916.6348	993.9195	1017.77	1016.64	1000.00	970.38	980.45
2.2 Tobacco	993.1199	1052.447	993.1199	1004.56	1004.56	1000.00	1000.00	1000.00
<b>Total Alcohol &amp; Tobacco</b>	<b>969.3327</b>	<b>998.4168</b>	<b>993.438</b>	<b>1009.82</b>	<b>1009.37</b>	<b>1000.00</b>	<b>989.28</b>	<b>992.93</b>
<b>3 Clothing &amp; Textiles</b>								
3.1 Clothing	834.8246	901.1243	953.6768	973.26	979.78	1000.00	951.56	1477.34
3.2 Textiles	927.7043	922.0207	922.0207	922.02	922.02	1000.00	1040.17	1040.17
<b>Total Clothing &amp; Textiles</b>	<b>891.695</b>	<b>916.635</b>	<b>939.0079</b>	<b>947.35</b>	<b>950.12</b>	<b>1000.00</b>	<b>977.96</b>	<b>1347.06</b>
<b>4 Transport Group</b>								
4.1 Fares	n.a	n.a	n.a	n.a	n.a	1000.00	1000.00	1000.00
4.2 Private Transport	958.3028	958.2174	958.4139	975.13	993.75	1000.00	1224.47	1225.55
<b>Total Transport Group</b>	<b>968.5487</b>	<b>964.6633</b>	<b>964.2895</b>	<b>981.78</b>	<b>999.12</b>	<b>1000.00</b>	<b>1181.47</b>	<b>1182.34</b>
<b>5 Housing Group</b>								
5.1 House Rentals	1000	1000	1000	1000.00	1000.00	1000.00	1000.00	1000.00
5.2 House Maintenance	984.3682	979.0015	983.0665	989.32	981.47	1000.00	951.05	960.48
5.3 Fuel & Electricity	917.3033	920.1978	917.3033	958.96	958.96	1000.00	1000.00	1099.75
5.4 Household Appliances)	n.a	n.a	n.a	n.a	n.a	1000.00	1000.00	1000.00
<b>Total Housing Group</b>	<b>955.1838</b>	<b>972.9702</b>	<b>962.931</b>	<b>986.29</b>	<b>983.36</b>	<b>1000.00</b>	<b>989.95</b>	<b>1037.34</b>
<b>6 Miscellaneous Group</b>								
6.1 Education	1000	1000	1000	1000.00	1000.00	1000.00	1000.00	1000.00
6.2 Telecom	982.5319	1000	1000	1000.00	1000.00	1000.00	1000.00	1000.00
6.3 Entertainment	1032.787	1032.787	1032.787	1032.79	1032.79	1000.00	1000.00	1000.00
6.4 Toiletries	1052.585	1045.449	994.7591	969.47	972.50	1000.00	1000.00	890.05
6.5 Cleaning Materials	1039.016	1025.66	999.2231	984.26	1000.00	1000.00	1000.00	985.93
6.6 Miscellaneous	1262.293	1262.293	1262.293	1262.29	1367.48	1000.00	967.41	967.41
<b>Total Misc. Group</b>	<b>1026.659</b>	<b>1012.892</b>	<b>1000.729</b>	<b>995.16</b>	<b>1005.17</b>	<b>1000.00</b>	<b>993.85</b>	<b>982.85</b>
<b>All Groups</b>	<b>964.2604</b>	<b>977.9801</b>	<b>979.5956</b>	<b>990.16</b>	<b>998.89</b>	<b>1000.00</b>	<b>1017.09</b>	<b>1046.01</b>

## Appendix 2: Specifications of the Quarterly Change of the CPI

The table below provides the quarterly index of the groups that contribute to the observed Consumer Price Index of Tuvalu (Base May 2006)

Item		Base Year weight	previous weight (Aug-06)	current weights (Nov-06)	Previous Price	Price Relative	Current Price	Quarterly % Change	Items-to-price Contribution (base1000)
		<b>1. FOOD GROUP</b>							
1.1	Meat								
1.1.1	Lamb Necks	0.3114	0.3185	0.3043	\$4.50	\$4.50	\$4.30	-4.444	-0.1415
1.1.2	Lamb Chops	0.2412	0.2154	0.2508	\$6.70	\$6.70	\$7.80	16.418	0.3537
1.1.3	Chicken, Whole frozen	1.2740	1.2740	1.2917	\$7.20	\$7.20	\$7.30	1.389	0.1769
1.1.5	Sausages	0.6833	0.7026	0.7122	\$7.30	\$7.30	\$7.40	1.370	0.0962
1.1.6	Salt Beef	0.5405	0.5693	0.5750	\$9.90	\$9.90	\$10.00	1.010	0.0575
<b>Sub-Group Index(base 1000)</b>		<b>999.69</b>	<b>1005.26</b>					<b>0.56</b>	<b>0.5428</b>
1.3	Dairy Produce								
1.3.1	Condense Milk	0.5615	0.5615	0.8423	\$2.40	\$2.40	\$3.60	50.0000	2.8076
1.3.3	Eggs	0.5981	1.0467	0.9968	\$6.30	\$6.30	\$6.00	-4.762	-0.4984
<b>Sub-Group Index(base 1000)</b>		<b>1166.46</b>	<b>1255.23</b>					<b>7.61</b>	<b>2.3092</b>
1.4	Cereals								
1.4.6	Cabin Biscuit/in container per kg	2.8467	2.9329	2.8467	\$3.40	\$3.40	\$3.30	-2.941	-0.8626
<b>Sub-Group Index(base 1000)</b>		<b>1006.46</b>	<b>1000.00</b>					<b>-0.64</b>	<b>-0.8626</b>
1.5	Sugar and Sweets								
1.5.1	Brown Sugar per kilo (loose)	4.7472	4.7472	5.0439	\$1.60	\$1.60	\$1.70	6.250	2.9670
<b>Sub-Group Index(base 1000)</b>		<b>1000.00</b>	<b>1055.41</b>					<b>5.54</b>	<b>2.9670</b>
1.6	Fruits & Vegetables								
1.6.1	Oranges	0.1168	0.1278	0.0713	\$5.20	\$5.20	\$2.90	-44.231	-0.5654
1.6.3	Pears	0.2025	0.2184	0.1303	\$6.20	\$6.20	\$3.70	-40.323	-0.8805
1.6.4	Potatoes	0.3256	0.3256	0.3473	\$1.50	\$1.50	\$1.60	6.667	0.2171
1.6.5	Onions	0.4664	0.5597	0.7463	\$1.80	\$1.80	\$2.40	33.333	1.8657
1.6.6	English Cabbages	0.1748	0.1717	0.0826	\$5.40	\$5.40	\$2.60	-51.852	-0.8901
1.6.7	Taro	0.2807	0.2807	0.3087	\$3.00	\$3.00	\$3.30	10.000	0.2807
1.6.8	Cassava	0.4166	0.4166	0.4686	\$2.40	\$2.40	\$2.70	12.500	0.5207
<b>Sub-Group Index(base 1000)</b>		<b>1044.18</b>	<b>1069.15</b>					<b>2.39</b>	<b>0.5483</b>
1.7	Beverages								
1.7.2	Tea	0.4278	0.3500	0.3889	\$1.80	\$1.80	\$2.00	11.111	0.3889
1.7.4	Soft Drink	0.6483	0.6483	0.7204	\$0.90	\$0.90	\$1.00	11.111	0.7204
<b>Sub-Group Index(base 1000)</b>		<b>961.15</b>	<b>1016.56</b>					<b>5.77</b>	<b>1.1092</b>
1.8	Cooking Oil and Fats								
1.8.1	Cooking Oil	0.7142	0.7142	0.9646	\$3.85	\$3.85	\$5.20	35.065	2.5043
1.8.2	Dripping	0.0545	0.0545	0.0934	\$2.80	\$2.80	\$4.80	71.429	0.3893
1.8.3	Butter	0.6148	0.6148	0.6376	\$2.70	\$2.70	\$2.80	3.704	0.2277
<b>Sub-Group Index(base 1000)</b>		<b>1000.00</b>	<b>1225.61</b>					<b>22.56</b>	<b>3.1213</b>
1.9	Miscellaneous Food								
1.9.1	Salt	0.4136	0.4136	0.3878	\$1.60	\$1.60	\$1.50	-6.250	-0.2585
1.9.2	Tomato Sauce	0.3351	0.3351	0.3650	\$2.80	\$2.80	\$3.05	8.929	0.2992
1.9.3	Soy Sauce	0.3913	0.3787	0.4039	\$1.50	\$1.50	\$1.60	6.667	0.2524
1.9.5	Meals take away from Restraunt	1.1579	0.8391	0.9565	\$5.00	\$5.00	\$5.70	14.000	1.1747
<b>Sub-Group Index(base 1000)</b>		<b>868.93</b>	<b>926.97</b>					<b>6.68</b>	<b>1.4678</b>
<b>Group Index(base 1000)</b>		<b>1009.75</b>	<b>1025.64</b>					<b>1.57</b>	<b>11.2030</b>



Item	Base Year weight	previous weight (Aug-06)	current weights (Nov-06)	Previous Price	Price Relative	Current Price	Quarterly % Change	Items-to-price Contribution (base1000)
<b>2. ALCOHOL &amp; TOBACCO GROUP</b>								
2.1 Alcohol								
2.1.2 Distilled Spirit	0.8810	0.8810	0.8653	\$32.00	\$32.00	\$31.43	-1.781	-0.1569
2.1.3 Wine	0.2825	0.2825	0.3403	\$21.00	\$21.00	\$25.30	20.476	0.5784
<b>Sub-Group Index(base 1000)</b>		<b>970.38</b>	<b>980.45</b>				<b>1.04</b>	<b>0.4215</b>
<b>Group Index(base 1000)</b>		<b>989.28</b>	<b>992.93</b>				<b>0.37</b>	<b>0.4215</b>
<b>3. CLOTHING &amp; TEXTILES</b>								
3.1 Clothing								
3.1.1 Men's T-Shirt	0.5152	0.5152	1.2986	\$9.80	\$9.80	\$24.70	152.041	7.8337
3.1.2 Men's Singlet	0.2281	0.2281	0.5640	\$8.90	\$8.90	\$22.00	147.191	3.3581
3.1.4 Nappies	0.9442	0.8498	0.7554	\$0.90	\$0.90	\$0.80	-11.111	-0.9442
<b>Sub-Group Index(base 1000)</b>		<b>951.56</b>	<b>1477.34</b>				<b>55.25</b>	<b>10.2476</b>
<b>Group Index(base 1000)</b>		<b>977.96</b>	<b>1347.06</b>				<b>37.74</b>	<b>10.2476</b>
<b>4. TRANSPORT</b>								
4.2 Private Transport								
4.2.2 Diesel	0.2343	0.3012	0.3096	\$1.80	\$1.80	\$1.85	2.778	0.0837
<b>Sub-Group Index(base 1000)</b>		<b>1224.47</b>	<b>1225.55</b>				<b>0.09</b>	<b>0.0837</b>
<b>Group Index(base 1000)</b>		<b>1181.47</b>	<b>1182.34</b>				<b>0.07</b>	<b>0.0837</b>
<b>5. HOUSING</b>								
5.2 House Maintenance								
5.2.2 Cement	0.5953	0.5953	0.6303	\$17.00	\$17.00	\$18.00	5.882	0.3502
<b>Sub-Group Index(base 1000)</b>		<b>951.05</b>	<b>960.48</b>				<b>0.99</b>	<b>0.3502</b>
5.3 Fuel & Electricity								
5.3.2 Kerosene	2.7285	2.7285	3.5081	\$1.40	\$1.40	\$1.80	28.571	7.7958
5.3.3 Butane Gas	0.8774	0.8774	0.9202	\$41.00	\$41.00	\$43.00	4.878	0.4280
<b>Sub-Group Index(base 1000)</b>		<b>1000.00</b>	<b>1099.75</b>				<b>9.97</b>	<b>8.2238</b>
<b>Group Index(base 1000)</b>		<b>989.95</b>	<b>1037.34</b>				<b>4.79</b>	<b>8.5739</b>
<b>6. MISCELLANEOUS</b>								
6.4 Toiletries								
6.4.2 Deodorant	0.2744	0.2744	0.1439	4.10	4.10	2.15	-47.561	-1.3052
<b>Sub-Group Index(base 1000)</b>		<b>1000.00</b>	<b>890.05</b>				<b>-11.00</b>	<b>-1.3052</b>
6.5 Cleaning Materials								
6.5.2 Bar Soap	0.6055	0.6055	0.5744	\$3.90	\$3.90	\$3.70	-5.128	-0.3105
<b>Sub-Group Index(base 1000)</b>		<b>1000.00</b>	<b>985.93</b>				<b>-1.41</b>	<b>-0.3105</b>
<b>Group Index(base 1000)</b>		<b>993.85</b>	<b>982.85</b>				<b>-1.11</b>	<b>-1.6157</b>
<b>All Group Index (base 1000)</b>		<b>1017.09</b>	<b>1046.01</b>				<b>2.84</b>	<b>28.914</b>